

# ***Moodle - Kaltura - Add Uploaded Media to Moodle Course***

At the end of this document, users will be able to upload media (video, audio) to their Kaltura My Media.

## **TECHNICAL REQUIREMENTS**

- Kaltura works best with Mozilla Firefox. Versions of Google Chrome released after September 1, 2015 are no longer compatible with the software that runs Kaltura. Safari will only work if third party cookies are enabled. [Follow the University of Connecticut's directions](#) to enable third party cookies to use Kaltura with Safari.
- Make sure that your Adobe Flash is up to date and any Adobe Flash plugins are installed.
- For Mac computers, Java SE 6 is the Java client that runs best with Kaltura. The [download file](#) needed is provided by Apple.

## **Editing Course**

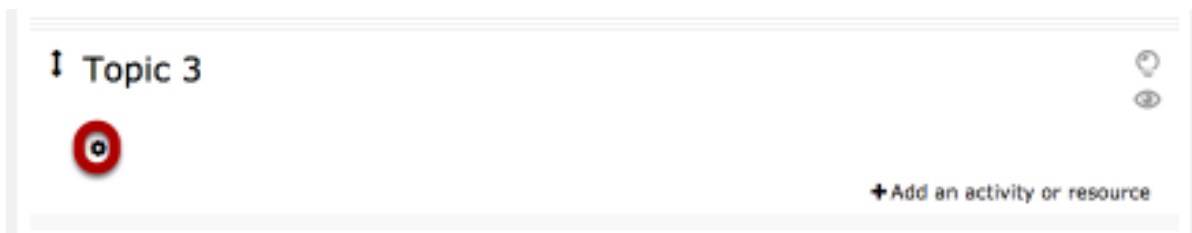


To add videos to your course, enter your Moodle course and select **Turn Editing On**.

## **Two Options to Add Video to Course**

There are two options to add video to your Moodle course. You can either embed a video to the Week/Topic Summary (above your content for the week) or as an additional linked resource. Typical use cases for embedding a video for the week or topic is a weekly overview, weekly lecture, or a welcome video.

## **Embed Video to the Week/Topic Summary**



Find the week in which you wish to embed the video and click the **Gear** icon.

## Summary of Topic 3

Expand all

- General

Section name

☐ Use default section name

Summary

Rich text editor toolbar with icons for bold, italic, underline, link, unlink, list, indent, outdent, undo, redo, and a red circle highlighting the 'Insert' icon.

Save changes

Cancel

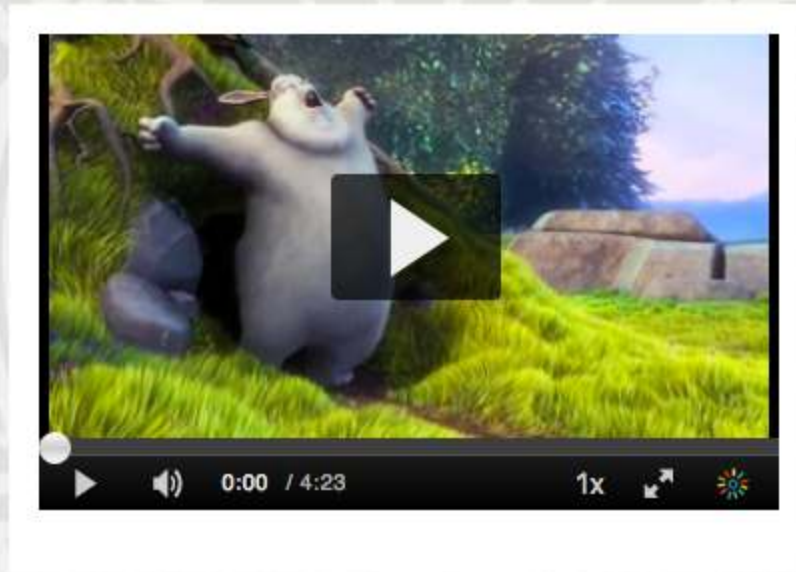
Find the **Kaltura icon** and click on it.

Video player interface showing a video titled "Animals at the Zoo" from Sarah Sargison. The video is 04:23 long. A "Select" button is visible next to the video, and a dropdown menu is open showing options: Large, Medium, and Small.

Select the video by locating the **Select** button next to the desired video and pressing the **arrow** to select the size.

For embedding a video, I would suggest the **Medium** or **Small** size.

## Preview




Embed

You will be presented with a Preview. Click **Embed**.

General

Section name  ☐ Use default section name

Summary 

`https://www.youtube.com/watch?v=...&list=PL...` 

There will be a line of text - this is your Kaltura video. If you wish to remove the video, delete this line of text.

Press **Save Changes**.

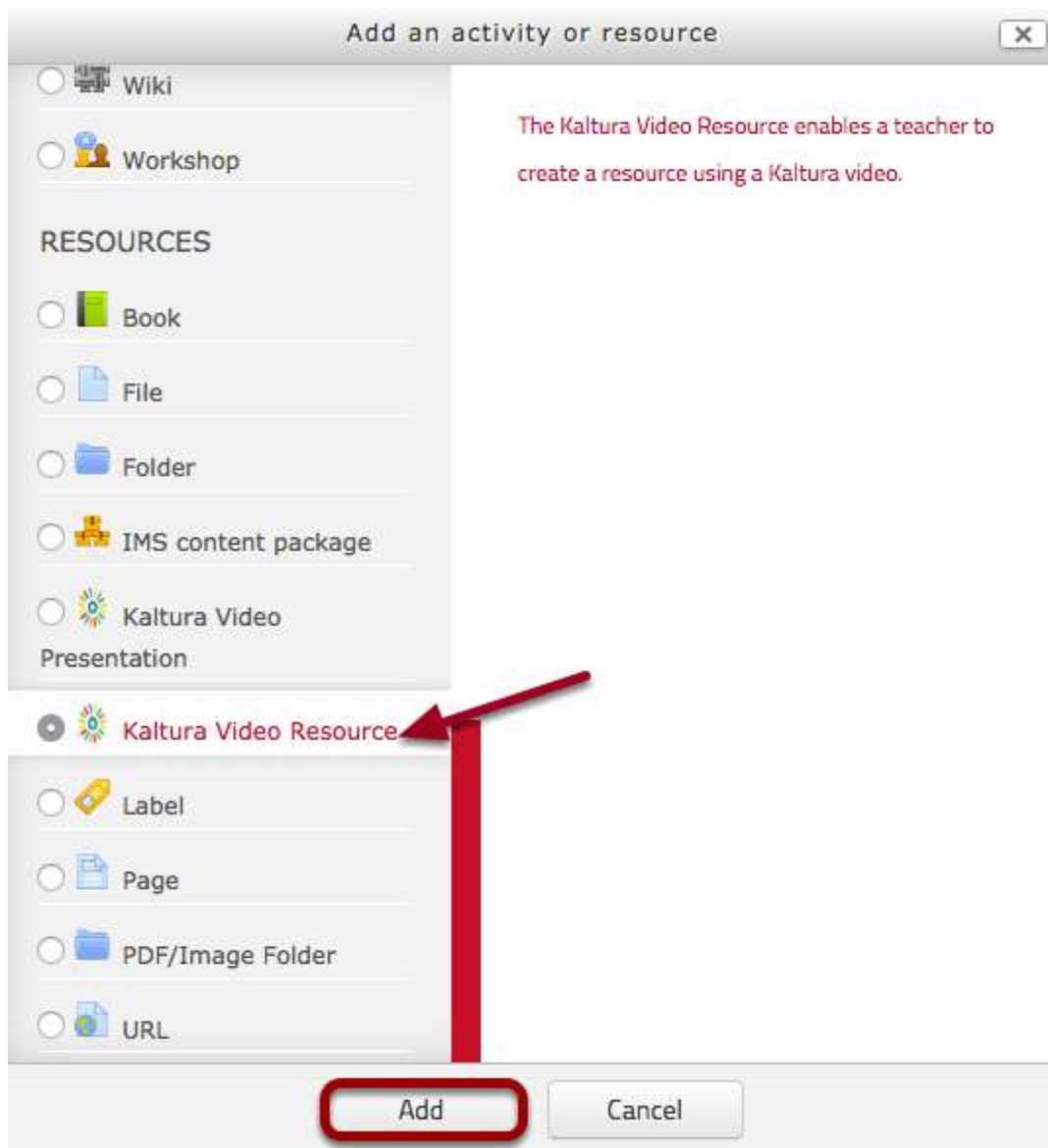


This is what an embedded video looks like in your Moodle course. This is the **medium video size**.

## Adding Kaltura Video as Resource Link



Click on **Add an activity or resource**.



Scroll down until you see **Kaltura Video Resource**. Click the radio button and click **Add**.

## ✳ Adding a new Kaltura Video Resource to Topic 4 ✳

► Expand all

### ▼ General

**Name \***  1

**Description**

The animals at the zoo video is from the internet. 2

3

Video

Type in a title for the video link, add a description, and open the **Video** section.

▼ Video

► Common module settings

► Restrict access

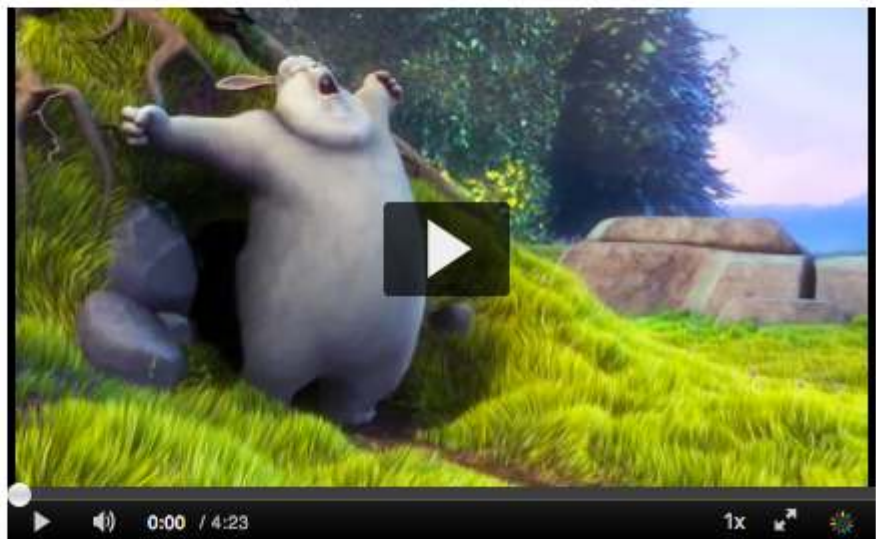
Select **Add Media**.



Select the video you wish to add by finding the **Select** button and clicking on the **arrow** next to it to choose the size.

When linking to the video, I choose the **Medium** or **Large** sizes.

▼ Video



Replace media

► Common module s

► Restrict access

Save and return to course

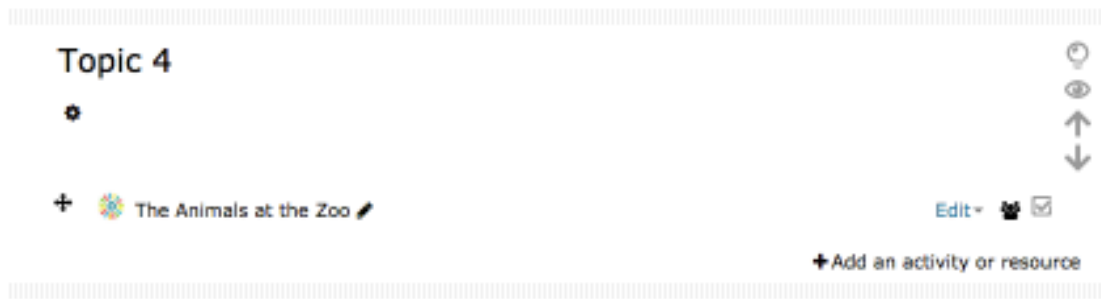
Save and display

Cancel

If you want to replace the video, select **Replace media**.

Click **Save and Return to Course** to return to the course page or click **Save and display** to show the video.





This is an example of the link to the video.



This is an example of the video when the link is accessed. This is the **large video size**.